



# MTA Newsletter

## Fall 2024 Edition

### President's Message

Welcome back! I hope you were able to recharge your batteries over the summer, and that you are ready to tackle a new school year.

Now that the 2023-2028 Provincial Collective Agreement has been signed, all parameters are in place, including changes to telework and teacher-controlled ped days. More information about these changes can be found [in this document](#). The EMSB has paid all teachers the retroactive salary adjustment on the pay of August 22, 2024, as well as the interest owed due to the late payment. New salary scales have also been applied as of this first pay period of 2024-2025, and the new salary scale information [can be found here](#). Questions concerning the retro or the new salary scales should be addressed to [Peter](#).

As the MTA Executive has hired an additional Professional Staff member, several dossiers have been moved around between Nadia, Peter, Domenico and Lori. Please consult [this document](#) to direct your email/phone call to the appropriate staff member. As Domenico Di Santo has resigned from the MTA Executive to take on his new role at the MTA Office, there will be a by-election this fall for the position of Vice-President, Adult Education and Vocational Training. More information concerning the election process will be sent to all members in September.

Whether you are returning to a familiar school and class, or exploring a new challenge in a new school, I wish each of you a safe, healthy, and happy 2024-2025. May this school year be your best one yet, filled with growth, learning, and meaningful connections with your students.

— Lori

### Content

[School Calendars](#)

---

[Professional Improvement Committee \(PIC\)](#)

---

[Salary Scales 2024-2025](#)

---

[Workload Changes 2023-2028](#)

---

[Value-Added Compensation & Compensation Days](#)

---

[QPAT Convention 2024](#)

---

[Workload Forms \(Youth Sector\)](#)

---

[Call for Committees](#)

---

[Contact Us](#)

## School Calendars



You can consult the 2024-2025 EMSB calendars for Youth Sector, Adult Education and Vocational Training [here](#).

## Professional Improvement Committee (PIC)

Did you know that teachers can apply for funds for many kinds of professional development? University tuition, workshops, collective and community projects, major conferences, language proficiency courses and tests are just a few examples of activities that can be funded by the EMSB-MTA PIC. Please take the time to carefully read the funding rules and application deadlines, as there can be changes from one year to the next. We will send you the PIC booklet and application form as soon as it is available from the EMSB.

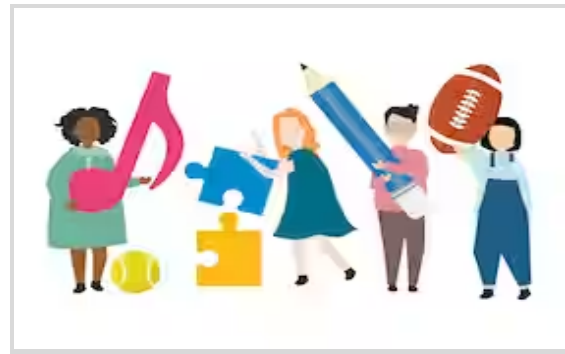
## Salary Scales 2024-2025

The first pay of 2024-2025 is August 22, 2024, and will occur every second Thursday thereafter until August 7, 2025. You can find the current salary scales [here](#), and on the MTA website.

## Workload Changes 2023-2028

As the 2023-2028 Provincial Collective Agreement involves many new changes to teachers' working conditions, [please consult this document](#) to have a better understanding of these changes and their impact on your workload.

## Value-Added Compensation & Compensation Days



The Board policy allowing for compensation for teachers who take part in extra-curricular activities remains in effect for 2024-2025. In addition, provisions in the Provincial Entente allow for teachers to be financially compensated for having carried out these activities (referred to as "value-added"). **Many activities can be eligible for both compensation in time AND for value-added funds.** Each September, the school administration should consult the School Council about the list of approved activities for the current school year and circulate it to staff. The compensation, which can be up to 3 days for 60 hours and over of ECA, can be taken at any time during the school year but there can be no substitution costs incurred for these days. The actual days taken must be

agreed to between the teacher and the principal. The policy does not state that compensation has to be taken during the last professional days in June. It is advisable for teachers to keep a written record of the dates and times of their ECA activities so that there is no dispute when requesting compensation and/or value-added.

More details can be found [here](#).

## QPAT Convention 2024



QPAT's Annual Convention is being held October 17-18 at the Hôtel Bonaventure. [Click here](#) for information about keynote speakers George Stroumboulopoulos, Anthony Johnson and Dr. James Makokis, pre-convention workshops on October 17, and workshops on October 17 and 18. Don't forget that pre-convention activities on October 17th and substitution for the day are eligible for PIC funding!

## Workload Forms (Youth Sector)

Every fall, teachers are asked to sign their workload forms. **Please ensure that each group and subject taught, including the language of instruction, is reflected on the form.** Other information should

include the number of students per group, as well as the minutes spent with each group. The totals at the bottom of the form must also be completed. It is each teacher's responsibility to make sure that their form is an accurate representation of their assignment for the current school year. This information is crucial, as it can have an impact on staffing and assignment in following years.

## Call for Committees



The MTA is once again asking for volunteers to serve on various internal MTA Committees, as well as several MTA-EMSB Parity Committees. If you are interested in volunteering to serve on any of these committees, [please complete the Google form here](#). **The deadline to apply is Friday, September 20, 2024.** Internal MTA committees include: Finance & Budget, Nominations, Adult Education, and Vocational Training. MTA-EMSB parity committees include: Educational Policies (EPC), the EPC sub-committees for Adult Education and Vocational Training, Professional Improvement (PIC), Special Education (SEC) and Support Our Rookie Teachers (SORT). A detailed description of each committee [can be found here](#).

## Contact Us



The MTA Office is open from 8:30 – 4:30  
Monday to Thursday, and 8:30 – 4:00  
Friday.

514.487.4580

4260, Girouard Avenue, suite 200, H4A 3C9

[mta@mta-aeem.com](mailto:mta@mta-aeem.com)

[lori@mta-aeem.com](mailto:lori@mta-aeem.com)

[psutherland@mta-aeem.com](mailto:psutherland@mta-aeem.com)

[nadia@mta-aeem.com](mailto:nadia@mta-aeem.com)

[domenico@mta-aeem.com](mailto:domenico@mta-aeem.com)